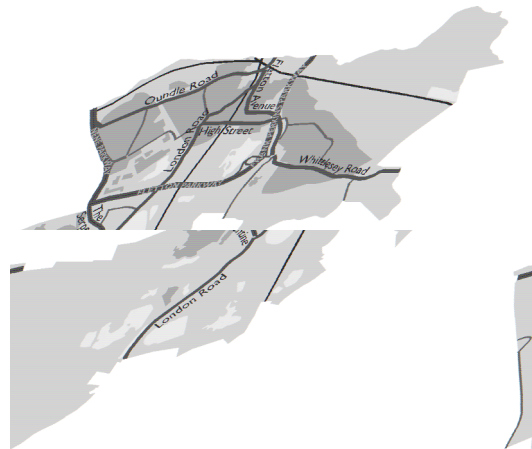


NOT PROTECTIVELY MARKED



## Neighbourhood Profile Update

*South Team East*



*June 2009*

**CONTENTS**

<b>1. Introduction</b>	<b>2</b>
<b>Aim</b>	<b>2</b>
<b>Methodology</b>	<b>2</b>
<b>2. Previous Priorities &amp; Engagement Activity</b>	<b>3</b>
<b>Previous Priorities</b>	<b>3</b>
<b>Engagement Activity</b>	Error! Bookmark not defined.
<b>3. Emerging Issues</b>	<b>6</b>
<b>4. Recommendations</b>	<b>7</b>
<b>5. Current Crime And Incident Levels</b>	<b>8</b>

**1. Introduction****Aim**

The aim of the Neighbourhood profile update is to provide an overview of action taken since the last reporting period, identify ongoing and emerging crime and disorder issues, and provide recommendations for future priorities and activity in order to facilitate effective policing and partnership working in the area.

The document should be used to inform multi-agency neighbourhood panel meetings and neighbourhood policing teams, so that issues can be identified, effectively prioritised and partnership problem solving activity undertaken.

**Methodology**

This document was produced using the following data sources:

- *Crime Data 01 Dec 2008 to 28 February 2009.*
- *Incident data 01 Dec 2008 to 28 February 2009.*
- *Information from Police Officers, CBMS and PCSO's.*

## 2. Previous Priorities & Engagement Activity

### Previous Priorities

At the previous neighbourhood panel the following issues were adopted as priorities. The tables below summarise action taken and the current situation regarding the priorities which were set:

PANEL PRIORITY – the Parade, Chapel Street, Thistle Drive, Stanground Community Centre areas	
<b>Objective</b>	
<b>Action Taken</b>	<p>During the past 3 months there has been a considerable increase in policing presence within the above areas. We welcome PCSO Shirley BESWICK &amp; PCSO Stuart CRAIG to the Peterborough South East team. Both Shirley &amp; Stuart have a desire and drive to tackle the Anti-Social Behaviour (ASB) problems experienced in STANGROUND. We, unfortunately, have seen PCSO Tracy CHESTNUTT depart from the STANGROUND area to join the city centre team. Her knowledge and experience will be greatly missed, her local contacts are in regular contact with Shirley &amp; Stuart.</p> <p>Since joining the team both Shirley &amp; Stuart have spent a the vast majority of their working time within the Stanground area. To ensure they are visible and able to interact with the community they conduct patrols on foot within the area. These have been on a daily basis with them staying out on their area instead of returning to the station each day.</p> <p>Shirley &amp; Stuart have established strong relationships with local youths. Many of those are thought to have been responsible for the previous ASB. These relationships have allowed them to identify those responsible for ASB where descriptions / CCTV are received in connection with incidents that occur.</p> <p>Where we are able to identify offenders GAP referrals are sent to the parents of those involved. There is work actively being conducted with Peterborough City Council &amp; Cross Keys to issue Acceptable Behaviour Contracts to ensure those responsible adhere to reasonable standards of behaviour. Where they fail to do this there is work ongoing to gather evidence for the consideration of individual Anti-Social Behaviour Orders (ASBO's) via the court system.</p> <p>Our general experience is that there is less crime &amp; ASB incidents being reported. This is not to say that our work in this area is finished or indeed that all crime and ASB has stopped. We are aware that there are still incidents of poor behaviour, where these occur we are working hard to address them as and when they happen. This has sometimes not been possible but all incidents are followed up by Shirley &amp; Stuart when they are on duty.</p> <p>There has been work conducted at STANGROUND COMMUNITY COLLEGE, this has again centred around building relationships with local youths so that we may educate and identify where required. There is a Safer Communities officer working within the college. The regular visits by Shirley &amp; Stuart have been well received and will continue.</p> <p>There is considerable time being invested into the skate park behind the community centre. During their interactions with the local youths it was suggested that there was no particular outlet to prevent groups congregating in the Parade area. In order to ensure the views of those likely to use the area were considered we have work directly with those youths throughout the consultations. The youths have met with the council and have expressed their desire to upgrade the skate park. Permission has been received to include a covered shelter with seating, a permanent goal post and an upgrade to the existing skate park.</p> <p>There is a positive attitude from the youths who are keen to ensure they have an area to socialise / enjoy themselves. We believe this in turn will have a direct impact on the ASB problems.</p>

NOT PROTECTIVELY MARKED

	<p>Funding has yet to be secured for this development but there is lots of fund-raising being done to ensure money is raised to pay for this work. There is also consideration for a new play area for younger children.</p> <p>We held a public surgery with the local MP &amp; Peterborough City Council at STAN ROWING COMMUNITY CENTRE. This was poorly attended, we are keen to hear your views between the panel meetings but need your input to be able to make a difference.</p> <p>Patrols have been conducted by a roaming Neighbourhood Policing Team. An average of 12 hours per week has been spent in this area during the past month.</p> <p>Weekly Street surgeries with local policing team (Serpentine Green, Stanground Community Centre and Belsize Community Centre).</p>
<b>Current Situation</b>	Current Situation - Routine patrols & current engagement levels will continue.
<b>Continue or Discharge?</b>	Recommendations - Retain this priority - Remove Chapel Street, Thistle Drive & Community Centre areas. Monitor dispersal area to establish if required after expiration of existing order.

<b>PANEL PRIORITY – Anti-social behaviour in Fellowes Gardens</b>	
<b>Objective</b>	
<b>Action Taken</b>	<p>FELLOWES GARDENS is located in the Neighbourhood covered by PC Neil FRASER, PCSO Tina GRIFFIN &amp; PCSO HALEEM. The area has historically suffered with Anti-Social Behaviour ASB problems. PCSO GRIFFIN has had considerable engagement with local families. As a result of this engagement there is ongoing work to ensure that family members maintain acceptable levels of behaviour.</p> <p>As with other areas where behaviour is not acceptable written notification is sent to the home address of the individuals involved. This is regularly supported by visits to the home to ensure parents are aware of the behaviour of their children.</p> <p>Both Peterborough City Council and local housing providers have been involved in this engagement. This helps us ensure that a coordinated approach is taken to resolve problems. PCSO GRIFFIN has an excellent knowledge of the concerns in FELLOWES GARDENS and is quick to act where and when appropriate.</p> <p>Regular patrols are carried out by all of the local team. These patrols are a mix of foot patrol, cycle patrol and vehicle patrols when passing. The feedback to local officers is positive.</p> <p>During June there were 8 incidents that would seem to be ASB related with a similar amount during May. Where there was an immediate disorder problem they were dealt with by front line officers. Where there was no immediate concern the problems were dealt with either by front line or local officers.</p> <p>Weekly Street surgeries with local policing team (Serpentine Green, Stanground Community Centre and Belsize Community Centre).</p> <p>Patrols have been conducted by a roaming Neighbourhood Policing Team. An average of 8 hours per week has been spent between FELLOWES GARDENS &amp; EARLS CLOSE during the past month.</p>
<b>Current Situation</b>	Routine patrols will continue. Cross agency engagement will continue.
<b>Continue or Discharge?</b>	For decision by panel. The problem will still be managed if the priority is discharged.

<b>PANEL PRIORITY – Anti-Social Behaviour – Earls Close area</b>	
<b>Objective</b>	<i>To tackle and reduce the number of reported incidents of ASB in this area. Over a six month period there has been a significant increase in reported criminal damage attributed to the Anti-social behaviour. Local officers to provide an increase in the number of high visibility patrols to reassure the public and take positive action in relation to the reported ASB by making appropriate referrals through the GAP (Guardian Awareness Programme)</i>
<b>Action Taken</b>	<p>EARLS CLOSE again falls within the areas looked after by PCSO Shirley BESWICK &amp; PCSO Stuart CRAIG.</p> <p>During the past 3 months this area has been included as part of the regular patrol schedule. As always patrols are conducted to ensure thorough attention is paid to the area.</p> <p>One address in the area was targeted regularly, during the past 3 months there was incident involving criminal damage / burglary. Due to concerns about their safety, the occupant of the address has moved from the area. While this is not an ideal course of action it is believed this will contribute to a reduction in ASB incidents.</p> <p>There have been a number of 'neighbour disputes' between a number of addresses. These have been dealt with as and when they have been reported, some of the incidents have been related to an ongoing court case. Again, these incidents have been managed as and when they have been called in to us.</p> <p>Youths from STANGROUND have visited this area, they may have contributed to the ASB problem. As there have not been regular reports it is believed this problem is on the decline. With the work being done as mentioned earlier in this document it is believed this will reduce any further incidents if this is still a cause for concern.</p> <p>Patrols have been conducted by a roaming Neighbourhood Policing Team. An average of 8 hours per week has been spent between EARLS CLOSE &amp; FELLOWES GARDENS during the past month.</p> <p>Weekly Street surgeries with local policing team (Serpentine Green, Stanground Community Centre and Belsize Community Centre).</p>
<b>Current Situation</b>	Routine patrols will continue.
<b>Continue or Discharge?</b>	Discharge this priority.

### 3. Emerging Issues

Over the last three months (Mar to May 2009) there has been an increase of 22% (133 offences) in **total crime** compared to the previous three months (Dec 2008 to Feb 2009). Analysis of crime for Mar to May 2009 compared to the same period in 2008 shows an increase of 8% (55 offences).

**Robberies** have decreased by 27% this period with eight offences reported, this is a reduction of three offences compared to the previous period. **Violent crime** has increased by 43% (45 offences) for this period, and has increased by 10% (13 offences) compared to the same period in 2008.

**Burglary dwellings have decreased by 20%** (reduction of 14 offences) for this period compared to the previous three months, however this has increased by 38% (15 offences) compared to the same period in 2008. The hotspot wards for this offence are in Fletton (33%) and Orton with Hampton (33%) and hotspot repeat locations are Oundle Road, Albany Walk, Black Swan Crescent and Shrewsbury Court). **Burglary non dwelling** has increased by 42% (15 offences), however this is a slight decrease of 7% compared to the same period in 2008. **Criminal damage** has increased by 4% (eight offences) compared to the previous period and an increase of 16% (28 offences) in 2008.

**Vehicle crime has increased by 32%** (25 offences) from Mar to May 2009 compared to the previous three months, and is above recorded levels by 20% (17 offences) for the same period in 2008. **Theft from motor vehicle** has increased by 28% (16 offences) from Mar to May 2009 compared to the previous three months and has increased by 30% (17 offences) for the same period in 2008. **Theft of motor vehicle** has increased by 41% (nine offences) compared to the previous three months, however levels have remained the same when compared to the same period in 2008. Hotspot wards for vehicle crime are Stanground Central 27% and Fletton 45%.

**Anti Social behaviour has increased by 23%** (170 incidents) for the period Mar to May compared to the previous three months, and is above recorded levels by 36% (240 incidents) for the same period in 2008. Fletton accounts for 35% of all incidents, Orton with Hampton 28%, Stanground Central 32% and Stanground East 6%. **Rowdy and inconsiderate behaviour** incidents have received the most calls for service accounting for 65% of the total, other calls of interest; rowdy nuisance neighbours 11%, vehicle related nuisance 9%, malicious communication 5% and noise related incidents 4%. The peak days for all incidents are over a weekend particularly Friday and Saturday.

**Hotspot locations for ASB are as follows:**

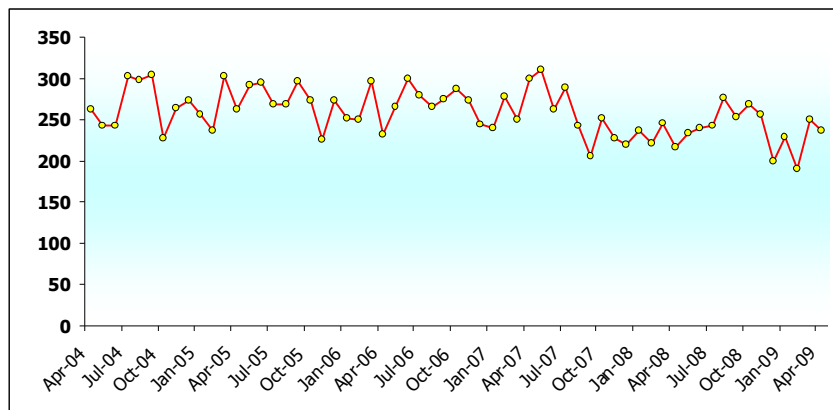
- **Lawson Avenue (41 incidents)** the majority of incidents are rowdy and inconsiderate behaviour. A number of incidents involve groups of youths causing a disturbance this includes fighting. Incidents are occurring mainly during the afternoon and early evening.
- **Oundle Road (36 incidents)**  
The majority of incidents are rowdy and inconsiderate behaviour. Incidents involve groups of youths causing a disturbance as well as noisy neighbours.
- **Royston Avenue (28 incidents)** the majority of incidents are rowdy and inconsiderate behaviour and relate to neighbour issues, such as noisy neighbours.
- **The Parade (28 incidents)** the majority of incidents are rowdy and inconsiderate and relate to groups of youth causing a nuisance around the shops, harassing customers and causing damage. Incidents are occurring mainly after 6pm at night.

**4. Recommendations**

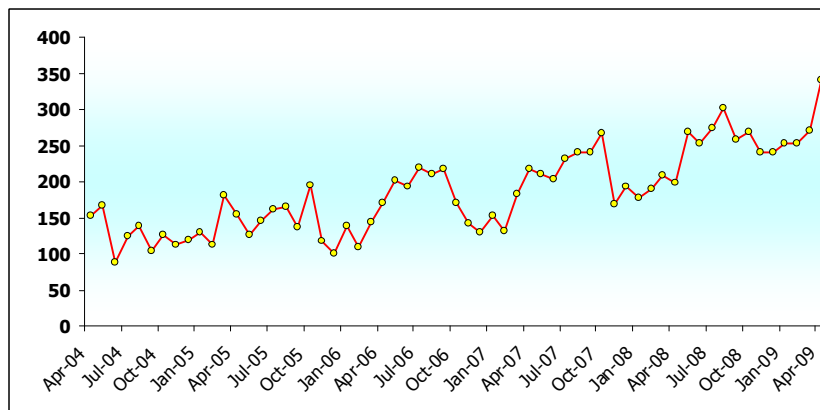
- To consider adopting Lawson Avenue & The Parade as a priority Anti-Social Behaviour area.
- To monitor the increase in Anti-Social behaviour within the South Team East area
- To monitor the increase in Vehicle crime, by introducing extra patrols particularly within Stanground Central and Fletton ward
- Continue with the work being carried out regarding dwelling burglaries in order to maintain the current reduction, however some work needs to be carried out with regard to the increase in non-dwelling burglaries.

### 5. Current Crime and Incident Levels

Total Crime



ASB Incidents



Current Crime and Incident Levels in Neighbourhood by Ward

			Dwell. Burg.	Other Burg	Violent Crime	Robbery	Theft of Vehicle	Theft from Veh.	Cycle Theft	Theft from Shop	Criminal Damage	Domestic Violence	TOTAL CRIME	TOTAL ASB	
Nhod	South Team East	1 <sup>st</sup> Mar 2009 to 31 May 2009	55	51	149	8	29	73	19	34	200	205	751	915	
		1 <sup>st</sup> Dec 2008 to 28 Feb 2009	69	36	104	11	20	57	12	22	192	181	618	745	
		1 <sup>st</sup> Mar 2008 to 31 May 2008	40	55	136	9	29	56	30	36	172	197	696	675	
WARDS	Stanground Central	1 <sup>st</sup> Mar 2009 to 31 May 2009	16	13	45	4	10	18	2	6	73	39	224	290	
		1 <sup>st</sup> Dec 2008 to 28 Feb 2009	18	16	31	3	4	13	3	4	67	45	184	267	
		1 <sup>st</sup> Mar 2008 to 31 May 2008	12	16	36	3	8	15	5	9	61	44	194	179	
	Stanground East	1 <sup>st</sup> Mar 2009 to 31 May 2009	3	0	6	0	3	4	1	0	8	26	26	29	52
		1 <sup>st</sup> Dec 2008 to 28 Feb 2009	5	1	10	1	3	2	0	0	10	16	16	36	55
		1 <sup>st</sup> Mar 2008 to 31 May 2008	6	1	10	0	1	2	3	0	10	22	22	41	62
	Fletton	1 <sup>st</sup> Mar 2009 to 31 May 2009	18	17	54	4	11	35	9	7	73	70	70	273	317
		1 <sup>st</sup> Dec 2008 to 28 Feb 2009	33	15	41	6	6	20	5	2	74	72	72	235	248
		1 <sup>st</sup> Mar 2008 to 31 May 2008	16	26	55	6	17	14	11	9	71	79	79	278	258
Orton with Hampton	1 <sup>st</sup> Mar 2009 to 31 May 2009	18	21	44	0	5	16	7	21	46	70	70	225	256	
	1 <sup>st</sup> Dec 2008 to 28 Feb 2009	13	4	22	1	7	22	4	16	41	48	48	163	175	
	1 <sup>st</sup> Mar 2008 to 31 May 2008	6	12	35	0	3	25	11	18	30	52	52	183	176	